

# Mantjiljarra Yulparirra Wiluna Martu Rangers

**Annual Report  
2022-2023 FY**



Mantjiljarra Yulparirra



**TARLKA  
MATUWA  
PIARKU**  
MANTJILJARRA YULPARIRRA PTY LTD



*'This is our Ngurra, we gotta look after it...'*  
**[Yvonne Ashwin]**



# Contents

- Key milestones
- Our vision
- Principles
- Foundations
- Wiluna Rangers Code of Conduct
- Governance Structure
- Message from the Directors
- Mantjiljarra Yulparirra Support Team
- Message from the Environment Manager
- Statistics
- Ranger Programs
  - Operations
  - Infrastructure Projects
  - Joint Management
  - Right Way Burning
  - Threatened Species Management
  - Mulgara Translocation
  - Research
  - Teaching Younger Generations
  - Youth Ranger Program
  - Training
  - Ranger Development
  - Culture Programs
- Partners and Funders

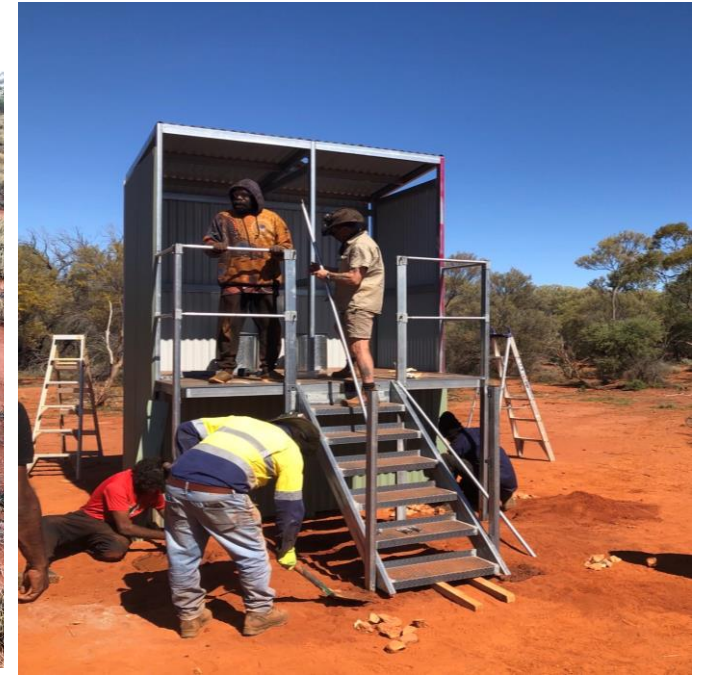
# Key Milestones 2022-23 FY



Indigenous Land Use agreement (ILUA) and Joint Management Agreement to support the creation of Matuwa Kurrara Kurrara National Park and Ngamurru (Lake Carnegie) Nature Reserve



Great Desert Skink (Tjakurra) confirmed at Matuwa

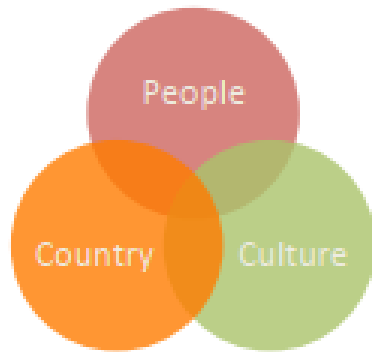


Commencement of an expanded Ranger Program at Ululla

**Matuwa and Kurrara Kurrara  
Indigenous Protected Area  
Country Management Plan  
2015 to 2020**



# OUR VISION



*Mantjiljarra Yulparirra is a Martu Ranger*

*Company established in 2019 to work with Tarlka Matuwa Piarku AC representing the Martu of the Wiluna Determination to build strong, sustainable and involved Rangers that work on the Native Title area.*

*Our **Vision** is built on **Principles** to ensure Martu law and culture is practiced and that Country is made healthier for the next generation.*

*Matuwa and Kurrara Kurrara and more recently, Ululla, will be managed through progressive partnerships between the Wiluna native title holders, the Government and the broader community.*

*Healthy partnerships will help balance the Martu and Western land management practices, create economically and environmentally sustainable employment, and contribute to the health and wellbeing of future Martu generations.*

*Looking after People, Country and Culture helps to keep Martu identity strong and retain knowledge between generations.*

*Mantjiljarra Yulparirra aims to:*

- 1. Support its Rangers to work on Country and get jobs*
- 2. Train up and develop the skill set for its Rangers*
- 3. Build a viable economy for its Rangers that maintains cultural knowledge*
- 4. Develop Ranger pathways for younger generations*
- 5. All programs have the oversight and discussion with our indigenous Directors on the Board of Mantjiljarra Yulparirra.*

# Principles

---

1. People: Family connections
2. Country: Maintain Healthy Country
3. Culture: Teach the next generation of Martu

Principles are supported by

- Partnerships
- Ngaparntji Ngaparntji (two way) learning



# Foundations

Principles have four Foundations that Wiluna Martu Ranger activities focus on

1. On Country Land Management
2. Two-way Science
3. Ranger Development
4. Youth Rangers



# Wiluna Martu Rangers Code of Conduct

1. Respect all Rangers (elders, young people) – no rough talk.
2. Help young people learn skills and knowledge.
3. No work no pay.
4. Arrive on time.
5. No drugs or alcohol on Country.
6. Wear safety shoes and clothes.
7. Drink lots of water.
8. Help with cooking and cleaning.
9. Keep Country clean – no rubbish.
10. Clean vehicles and equipment after each trip.
11. Put away equipment after each trip.
12. Turn up to your training.
13. Be proud of being a Ranger





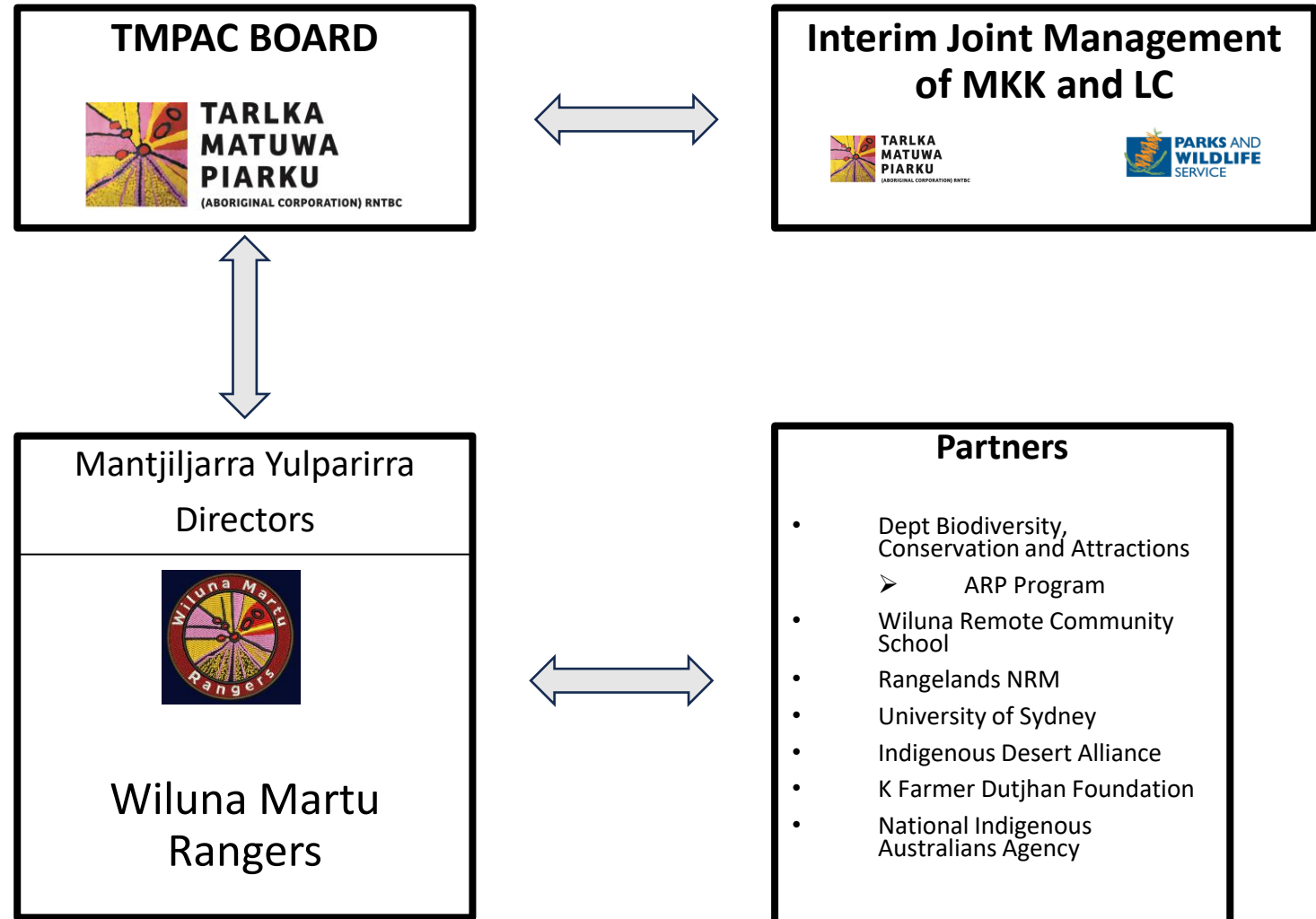
**Matuwa and Kurrara Kurrara  
Indigenous Protected Area  
Country Management Plan  
2015 to 2020**



# Governance Structure

The creation of an Interim Joint Management Body has redesigned the pathway of Mantjiljarra Yulparirra Directors for making decisions for the new National Park and Nature Reserve.

Other Ranger Program activities across the Wiluna Determination remain with Mantjiljarra Yulparirra and partners.



# Message from the Mantjiljarra Yulparirra Directors



Joyce Tullock



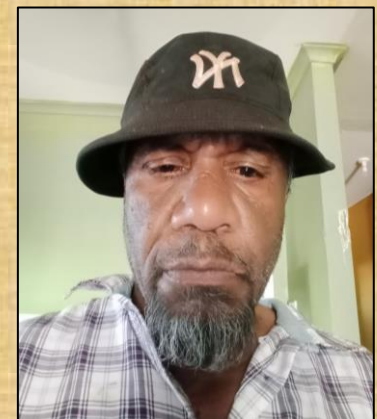
Delvene Patch



Annette Williams



Tianie Farmer



Robbie Wongawol

- *The Wiluna Ranger Program continues to provide important employment and connections to Country for our Wiluna community.*
- *We had 4 meetings in the 2022-23 FY, in Wiluna. We discussed the field projects, and the jobs that Rangers do. We talked about the new Interim Joint Management Body that is created, and how we will work with TMPAC and DBCA.*
- *We are happy to be working at Ululla as this is an important ladies area for our Tjukurrpa. It is our Ngurra.*
- *We are proud of showing our youth our Country.*

# Mantjiljarra Yulparirra Support Team



Dorian Moro  
Environment Manager



Hugh Forward  
Ranger Coordinator



Chris Major  
Ranger Coordinator



Erin Henderson  
Finance



Anita Klaassen  
Logistics support

This 2022-23 financial year was our third as a self-governed Company *Mantjiljarra Yulparirra*, representing the Wiluna Martu Ranger Program.

With the expansion of our Ranger Program to now include Ululla, the work scopes and activities for Martu – and wages - have increased. Ululla represents an important area for our Martu: the cultural connections to this Country and the stories resonate strongly across the current generation families. The area, whose lease is being transferred to TMPAC, enables the PBC and its people to directly influence the activities and connections they have to this Country.

The creation of an Interim Joint Management Body following the approval of an ILUA and Joint Management Agreement between TMPAC and the State Department of Biodiversity, Conservation and Attractions now supports formal joint management of the Matuwa Kurrara Kurrara (MKK) and Lake Carnegie (Ngamurru) conservation reserves. MKK retains its native title and its IPA status and opens up the opportunities for Martu to now work alongside DBCA as formal joint partners, as well as the opportunities to host visitors through cultural tourism to the area.

# Message from the Environment Manager



Work on Country continued with a diversity of programs across MKK, and Ululla. A mens (wati) songline trip was completed to connect elders to this songline area in the west of the determination. The Wiluna Community School continues to be an important partner with their two-way science program. The Indigenous Desert Alliance remains an important partner to support skill development for our Rangers. Finally, the Western Desert Youth Ranger Program continued to trial Youth Ranger trips on Country.

The Ranger Program is building a strong momentum among its Wiluna community – and the wider community – by showcasing itself across social, print and film media, and this level of interest has sparked new levels of partnerships.

Our budget remains healthy, and our records are independently audited annually.

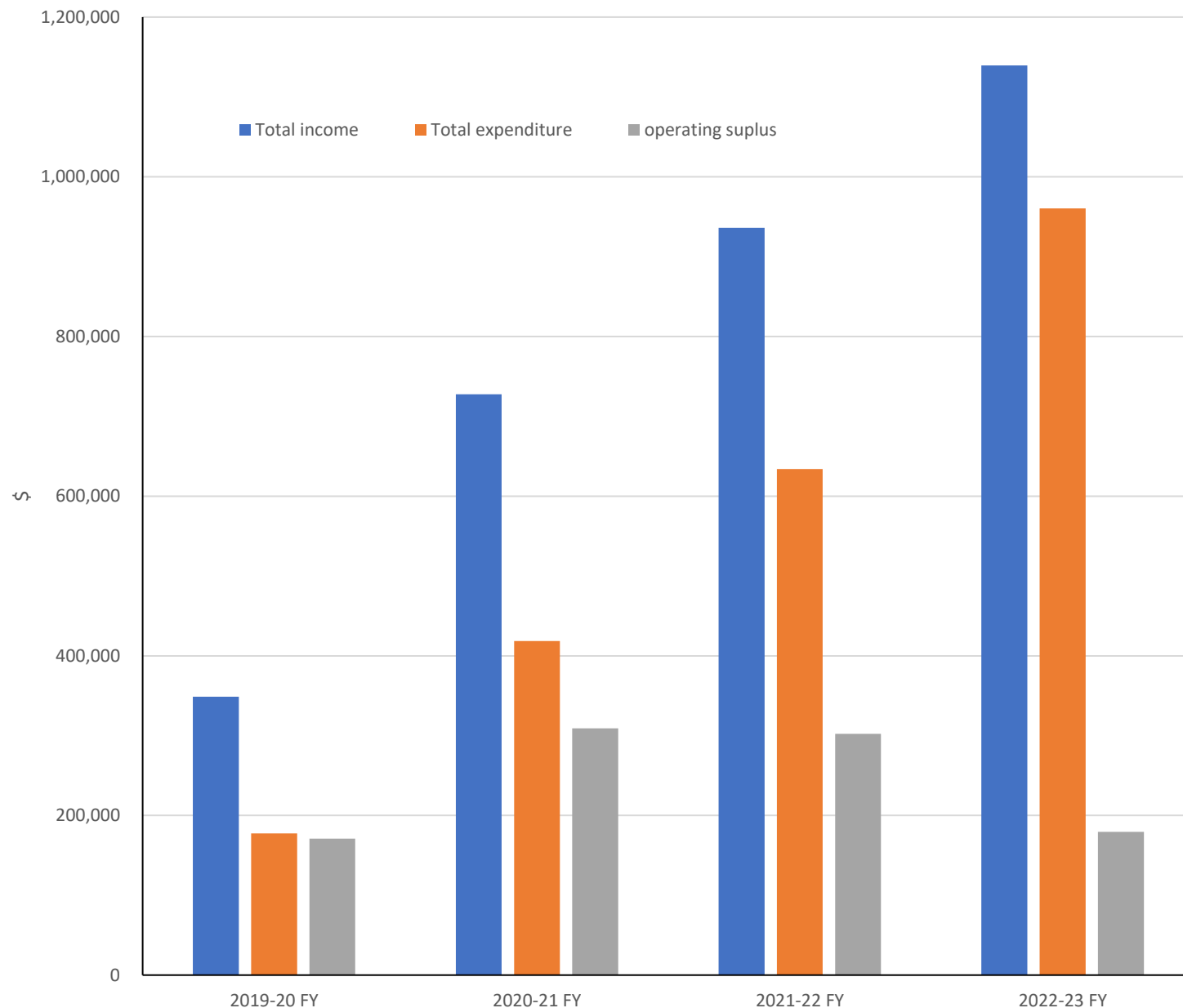
Finally, our Company was successful in receiving grants from the ARP Round 4 Ranger funding (DBCA) to commence more Ranger jobs on the Ululla pastoral lease, and the Connecting to Country funding (Department of Local Government, Sport and Cultural Industries).

This annual report is available on our website ([tmpac.com.au/annual-reports](http://tmpac.com.au/annual-reports))

# Ranger program statistics

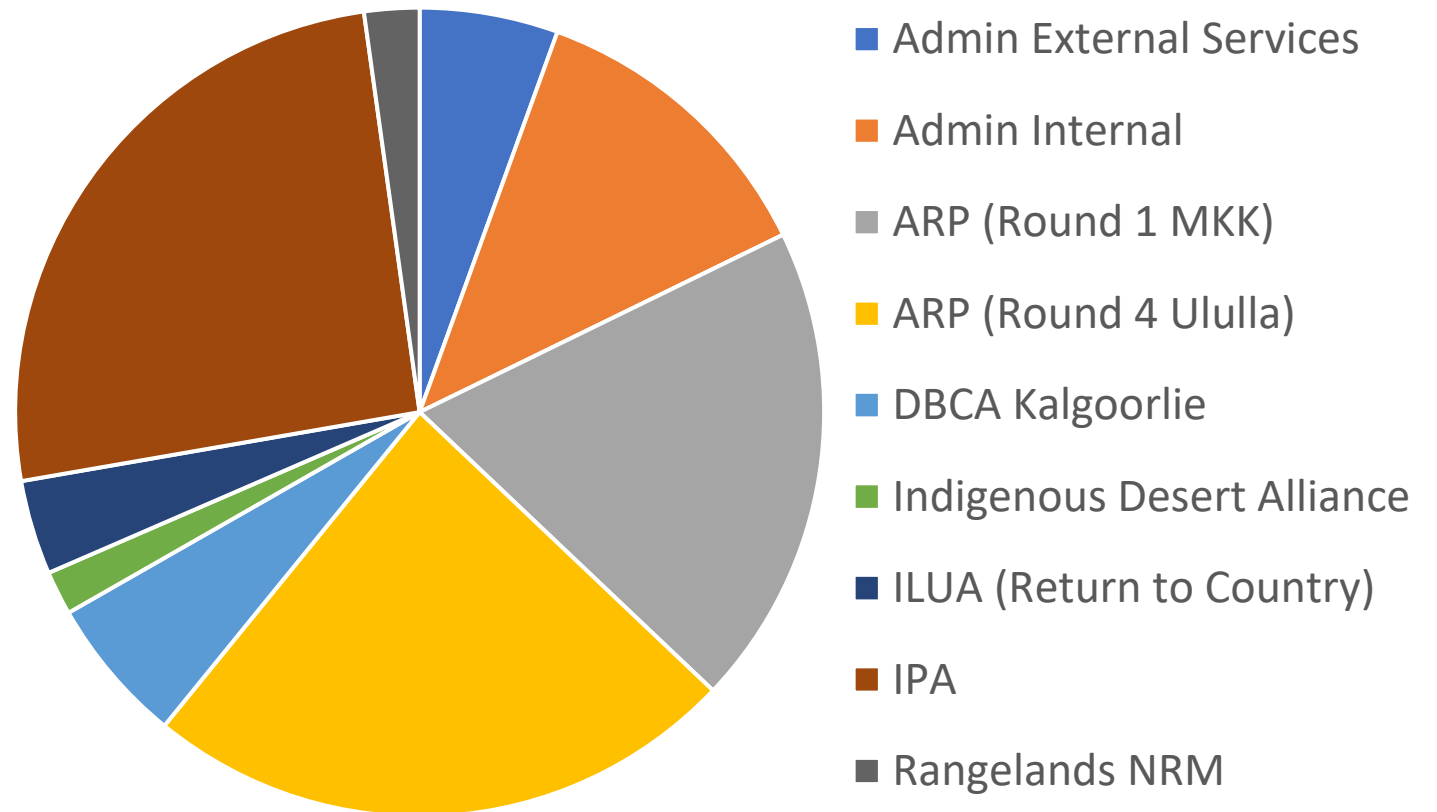
## Income & Expenses

- *Mantjiljarra Yulparirra had increased its income by 22% in the 2022-23 FY compared to the previous FY.*
- *Expenses were almost 52 % higher in 2022-23 FY than the previous FY*
  - *Increased expenses were primarily due to higher income associated with the Ululla Ranger Program, but also vehicle maintenance and running costs.*
  - *New Ranger Coordinators (1.5 FTE) were employed to support the wider diversity of work programs.*



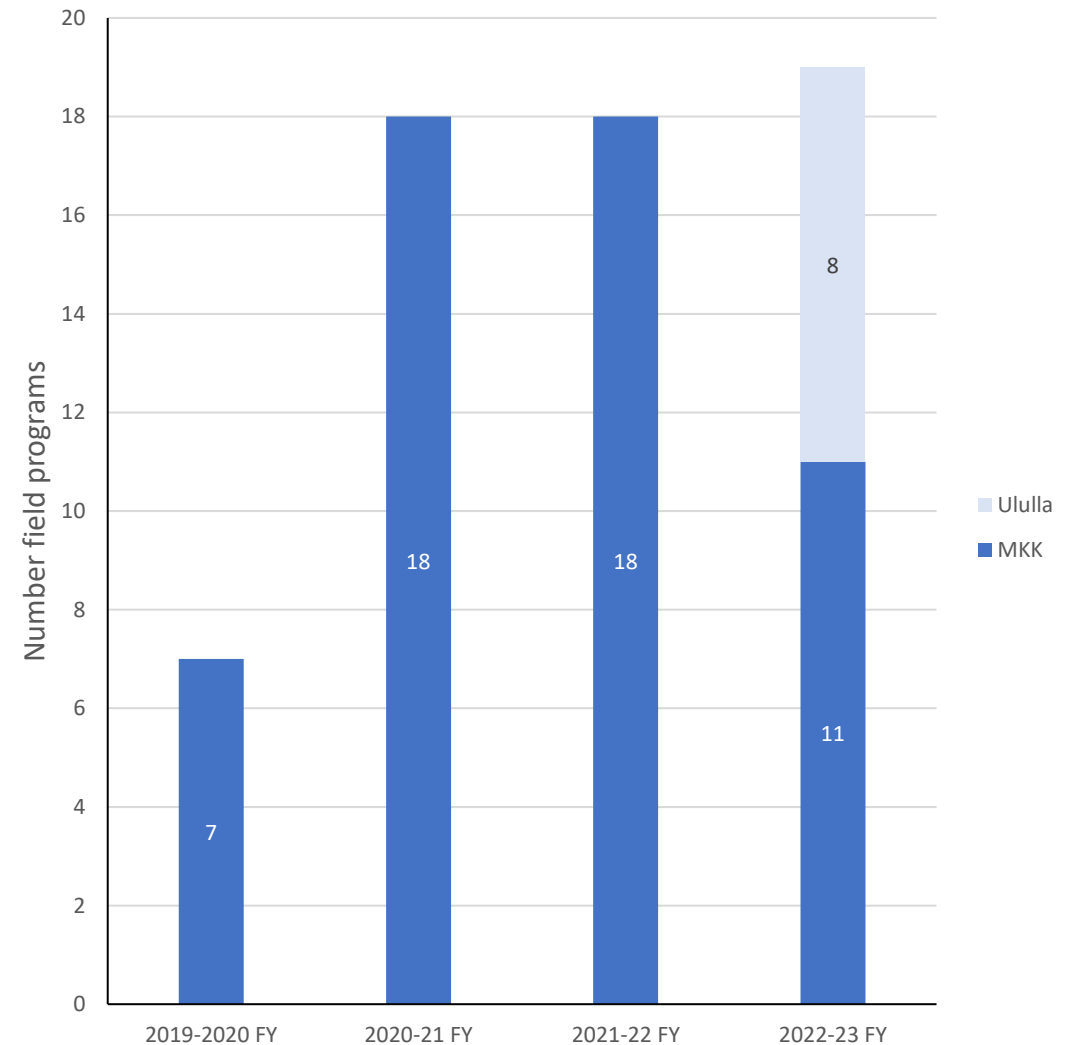
# Income sources

*Mantjiljarra Yulparirra aims to diversify its income. To date, income is primarily from external grants, with 68% of funding from the NIAA (IPA) and DBCA (ARP) Programs.*



# No. Wiluna Ranger field programs completed

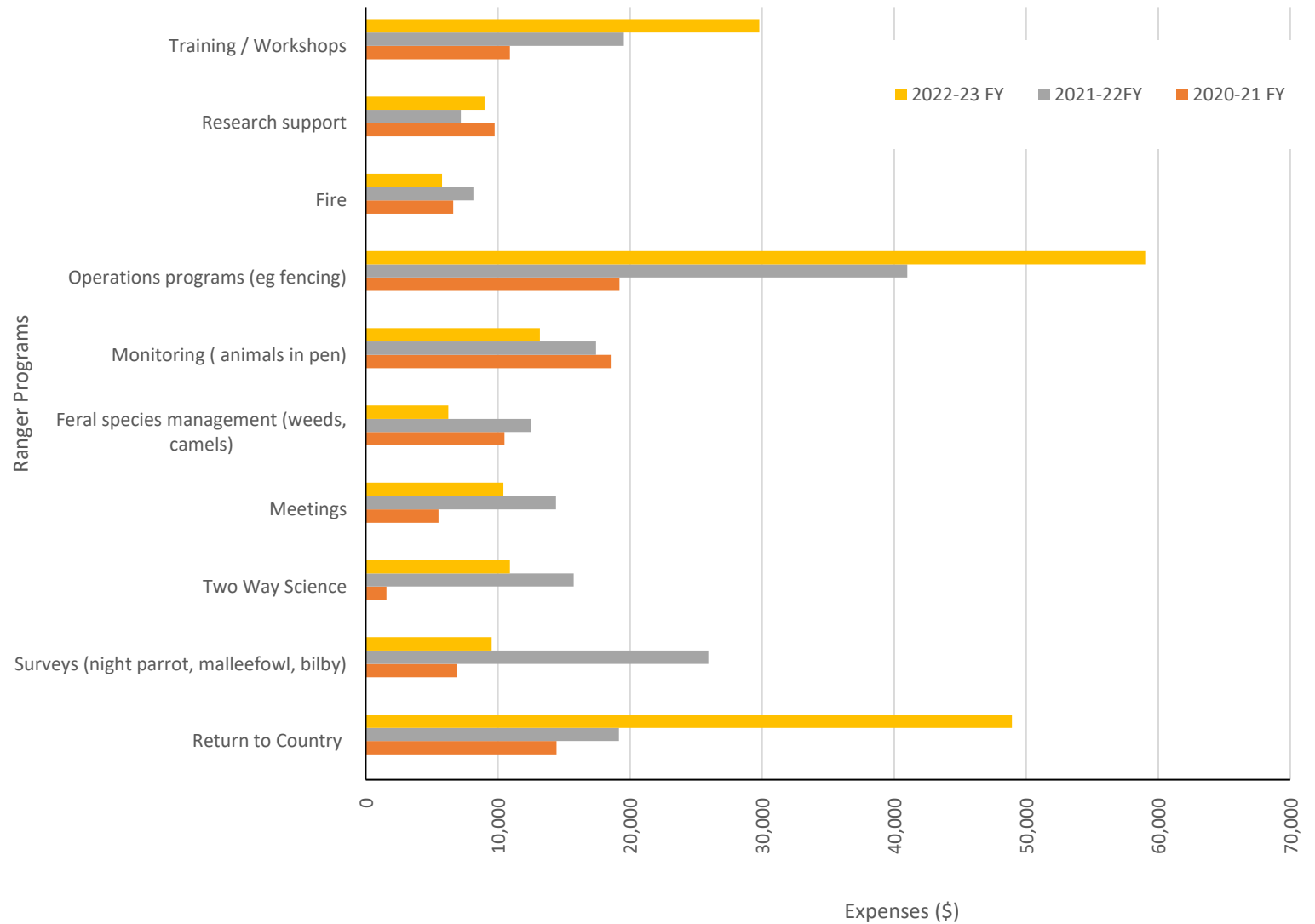
- *Mantjiljarra Yulparirra supported 19 Ranger Program activities this FY.*
- *Additional work programs included co-design and planning workshops to discuss ranger development at Ululla.*



# Ranger Program Expenditure

Programs included training/workshop attendance, science support roles including monitoring threatened species, weed control, operations trips (e.g. fencing, infrastructure build at Ululla), meetings, two-way science with the school, and Return to Country culture trips.

The diversity of the Programs for land activities, culture and training is what is making the business strong.

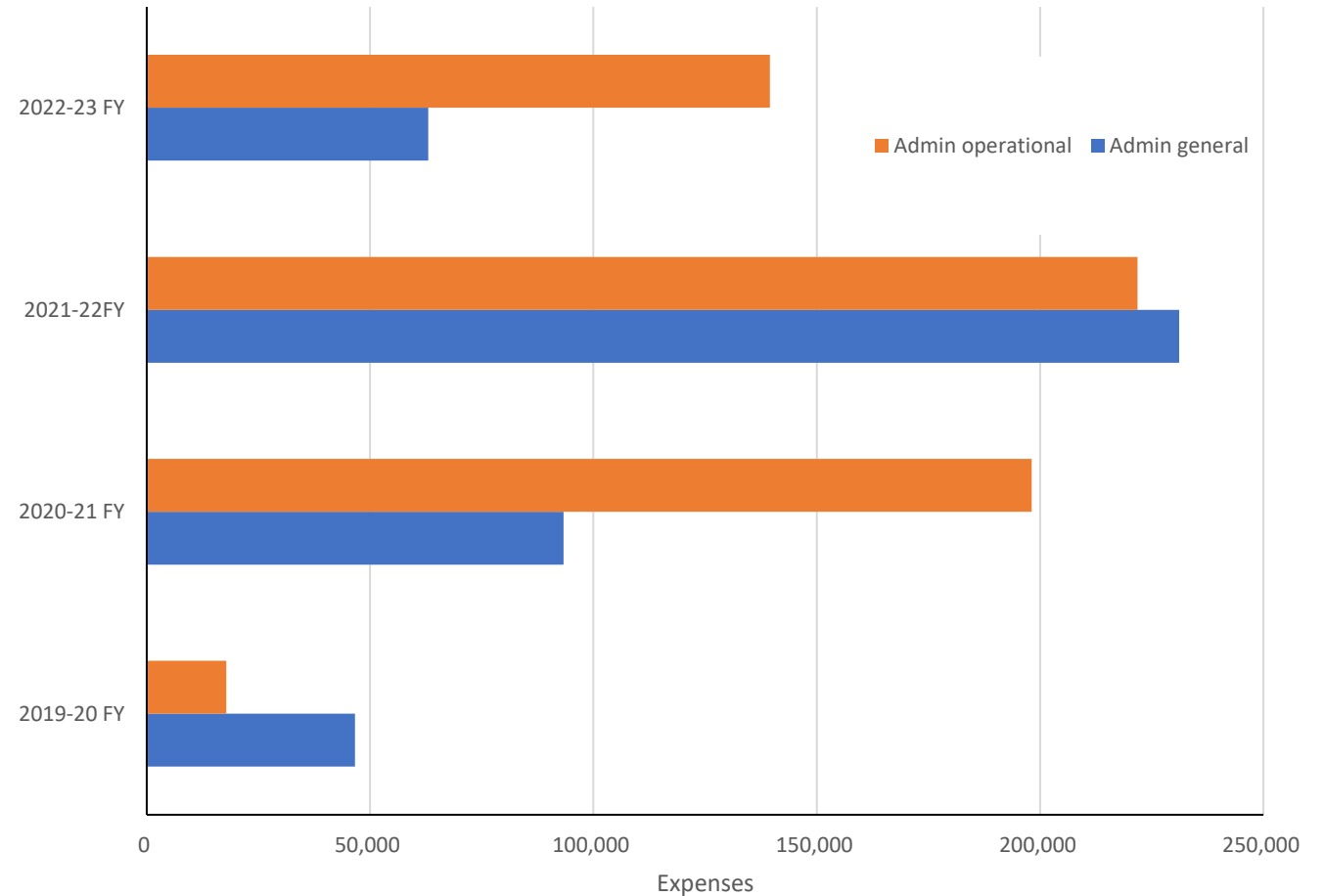




# Administration

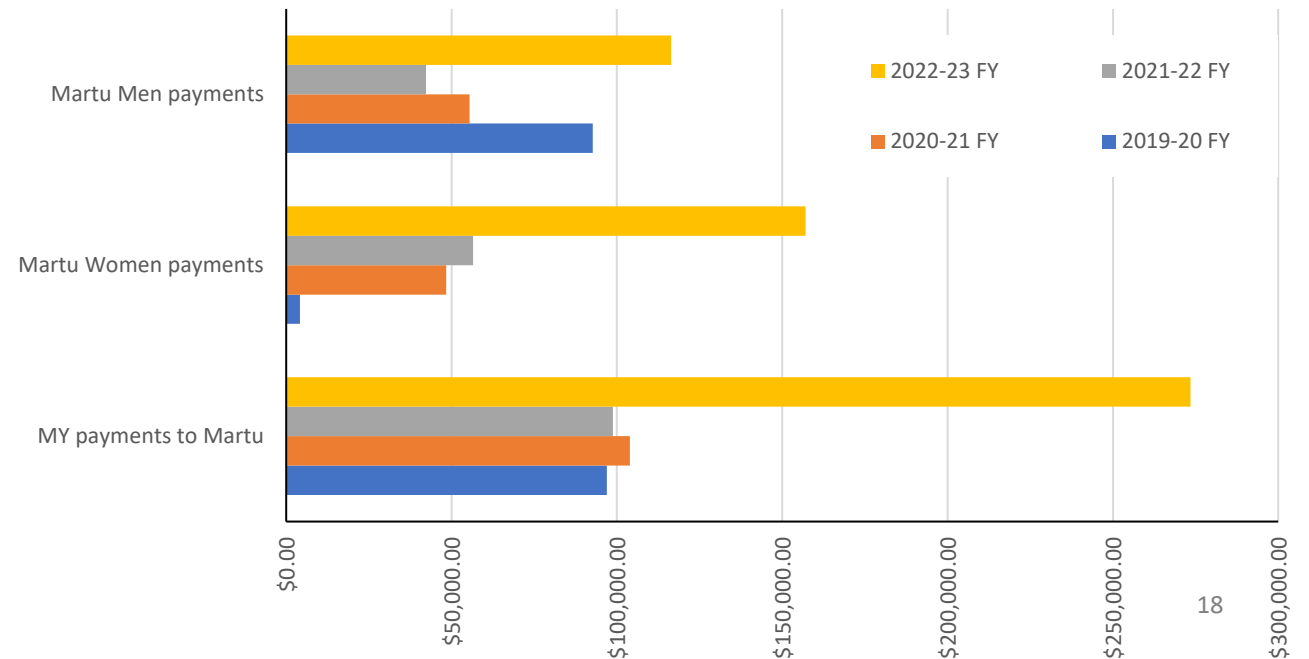
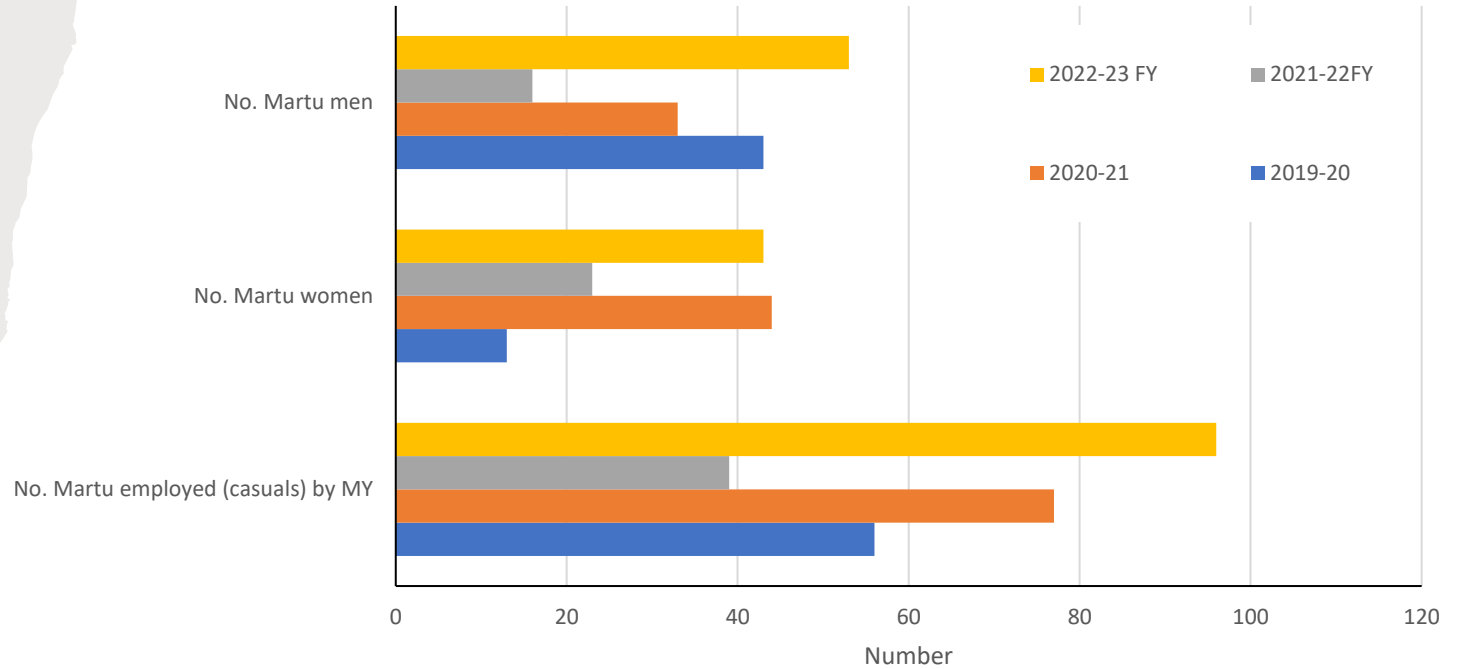
Distribution of funds expended for the administration of the Ranger Programs, and management of Company Mantjiljarra Yulparirra .

- Administration general fees included travel, food, general administration across the various Programs, and increased workshops.
- Administration operational fees included a full-time Environment Manager and Ranger Coordinator to support the Ranger Programs, plus TMPAC-managed book-keeping and accounts.



# MY payments to Martu 2022-23 FY

- 96 Martu (casual) Rangers
  - 43 women (wanti) and 53 men (wanti) were employed as regular or casual Rangers.
- \$274,000 paid in Martu wages
- 45% Martu women employed
  - wages were higher for women as more wanti elders were involved in Ranger Projects and planning.
- MY remains in a healthy financial position





# Ranger Programs



# Operations

---

Old fence line removal across  
Matuwa Kurrara Kurrara  
National Park



# Infrastructure Project

Establishing shelters and ablutions at Ululla



# Joint Management





## Right Way Burning

# Threatened Species Surveys



Caring for small animals





Mulgara translocation

Matuwa to Dirk Hartog Island





# Research





# Teaching younger generations Two way Science



# Youth Ranger Program

*Supported by  
K Farmer Dutjahn Foundation*



Keep Martu  
strong on ngurra

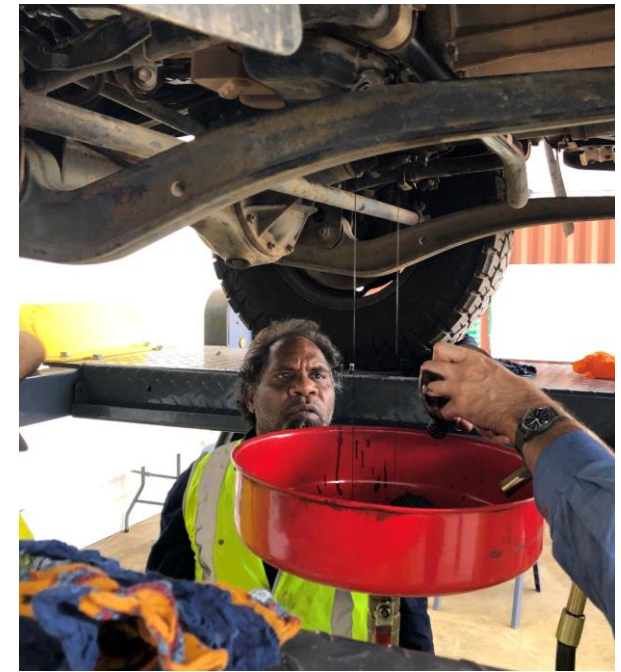
# Training



Keep Martu  
strong on *ngurra*



Plan for  
development



# IDA Conference 2022



# Ranger Development Program

Planning to host Warburton Rangers

*Supported by the Indigenous Desert Alliance*



Keep Martu  
strong on ngurra



Plan for  
development

# Culture Programs

## Ululla Ranger Exchange with Warburton Women

Supported by

Indigenous Desert Alliance  
Ranger Development Program



Keep Martu  
culture and  
heritage strong



Ngurraku ninti  
(knowledge of country)



# Return to Country

## Wati Trip

---

- Following song lines is an important part of sharing knowledge within current generations, and passing these to younger generations.



Keep Martu  
culture and  
heritage strong



Ngurraku ninti  
(knowledge of country)



# National Park and Nature Reserve

# Signing Ceremony

---





# Public Outreach

**NIT** NATIONAL INDIGENOUS TIMES

**encounters** Are you a First Nations person ready for a once-in-a-lifetime opportunity to gain professional development in the museum and cultural sector?

national museum australia

LATEST NEWS BUSINESS LIFESTYLE SPORT CULTURE OPINION PRINT EDITIONS CONTACT

Elusive great desert skink recorded on Matuwa Country for the first time

Emma Ruben - April 8, 2023

**The Guardian** News website of the year

News Opinion Sport Culture Lifestyle

**Beyond the fence: what does it mean to rewild the Australian desert?**

Rewilding is core to conservation efforts around the world. In Australia's threatened but intact deserts, where do people fit in with the strategy?

Exclusive National WA Biodiversity

This was published 7 months ago

**Bigger than Bali: WA's newest national park on the desert's edge**

**Peter Milne** May 5, 2023 - 6:20am

Save Share A A 9 View all comments

Western Australia has a new national park where science and Indigenous knowledge are combining to save endangered species.

**NEWSLETTER**

**Wiluna Martu Rangers**

**NOVEMBER 2023**

**Tarika Matuwa Piarku** (Aboriginal Corporation) Mantjiljarra Yulpaarra RNTBC (ICN 8156)

**Indigenous Desert Alliance** Keeping the desert connected

**Strengthening skills and connections: Wiluna Martu Rangers host cultural knowledge sharing camp for women**

2 minute read

From planning itineraries, following safety and welfare procedures, budgeting, ordering camp provisions to ensuring the culturally right people are involved along the way, there are many operational tasks that go into preparing a successful on-Country ranger trip.

**ABC NEWS**

Just In Watch Live Politics World Business Analysis Sport Science Health Entertainment Lifestyle Fact Check Other

**Mulgaras returned to Dirk Hartog Island as modern science, traditional culture fight 'tide of extinctions'**

ABC Goldfields / By Giulia Bertoglio and Phil Hemingway  
Posted Sat 19 Aug 2023 at 8:23am, updated Mon 21 Aug 2023 at 6:29am

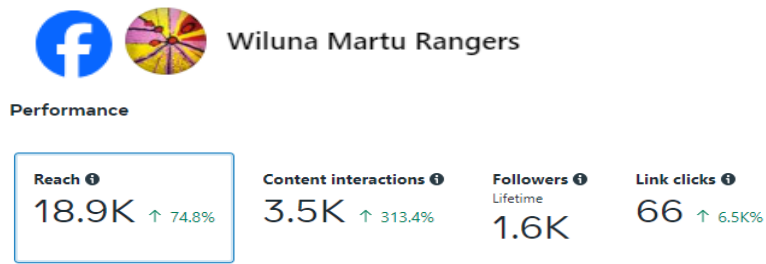
Saving the mulgara, the cutest Australian animal you've never heard of | ABC News

ABC is an Australian public broadcast service.

Watch on YouTube

# Social Media

- We increased our social traffic on Facebook, and created a new Instagram account for our followers.



Wiluna Martu Rangers 9+

1.4K likes · 1.6K followers

A page to keep people informed about activities on Matuwa, Kurarra Kurarra, Lake Carnegie and Ululla.

Posts About Videos Photos More

**Featured** Manage

People won't see this unless you pin something.

**Wiluna Martu Rangers**  
Posted by Tmpac Ranger  
5 d · 🌐

A group of Wiluna Martu Rangers recently travelled down to Whadjuk Noongar Boodjar (Perth) to learn about recording videos while out on-Country doing ranger work. See the photos and description from the IDA below:

**Indigenous Desert Alliance**  
1 Dec · 🌐

Recording and sharing stories about Country, culture and community is an important part of being an Indigenous ranger.... See more

wilunamarturangers

18 Posts 101 Followers 30 Following

Wiluna Martu Rangers  
Indigenous Rangers  
Working on Country

Grid of 18 photos showing various activities, including people on Country, a helicopter, and community events.

# Partners, Funders, Supporters





We would like to acknowledge the support of our corporate, government, academic and NGO partners for funding throughout the 2022-23FY. They share Mantjiljarra Yulparirra's vision of working together with practicality, honesty and respect, and who have contributed to creating a healthy and prosperous future for the Tarlka Matuwa Piarku Martu of Wiluna:



- Dept Biodiversity, Conservation and Attractions
  - ARP Program
  - Kalgoorlie Region
- Wiluna Remote Community School
- Rangelands NRM
- University of Sydney
- Indigenous Desert Alliance
- K Farmer Dutjhan Foundation
- National Indigenous Australians Agency







  Wiluna Martu Rangers

  Wiluna Martu Rangers

